



## For use with our Hero + Cameras

Information from the official GoPro Quick Start Guide

### HELP AND RESOURCES

#### UPDATE YOUR CAMERA

Get the most out of your GoPro with updated features and performance.

#### CREATE A GOPRO ACCOUNT

Receive updates, enter contests and more.

#### DOWNLOAD THE USER MANUAL

Find detailed info on settings, modes and more.

#### CONTROL. VIEW. SHARE

Learn more about the GoPro App.

#### WATCH TUTORIAL VIDEOS

Learn tips + tricks from the pros.

#### CONTACT CUSTOMER SUPPORT

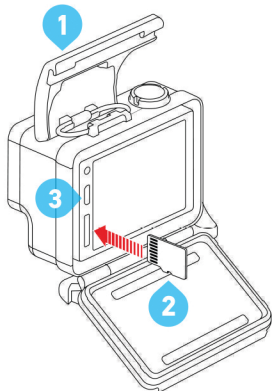
Get help and find answers to frequently asked questions.



VISIT  
**GOPRO.COM/  
GETSTARTED**

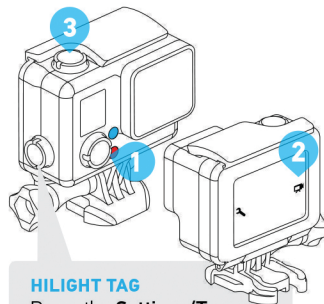
## SET UP

- 1 Unlatch and open the backdoor.  
*(The camera cannot be removed from the housing.)*
- 2 Insert a microSD card.  
*(Requires at least a Class 10 or UHS-I microSD card up to 64GB, sold separately.)*
- 3 Charge using the included USB cable.  
*(The battery cannot be removed from the camera.)*



## POWERING ON + RECORDING

- 1 Short press the **Power/Mode** button.
- 2 On the touch display, tap the mode icon and then select a video or photo mode.
- 3 Press the **Shutter/Select** button to start/stop recording.



### HIGHLIGHT TAG

Press the **Settings/Tag** button to tag key moments while recording or playing back video to quickly find the highlights later.

# QUICKSTART MODE GUIDE

## MODES



### VIDEO

Capture video.



### PHOTO

Capture a single photo.



### BURST

Capture photo bursts.



### TIME LAPSE

Capture a series of photos at set time intervals.



### PLAYBACK

Play back videos and photos.

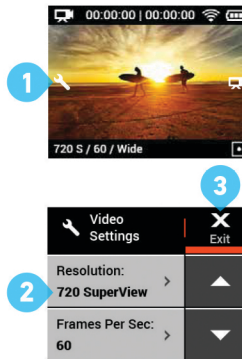


### SETUP

Adjust general camera settings.

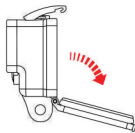
For full details about all modes, resolutions and settings, download the User Manual at [gopro.com/getstarted](https://gopro.com/getstarted)

## ADJUSTING SETTINGS

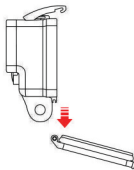


- 1 On the touch display, tap the settings icon to open the settings for the current mode.
- 2 Tap the setting you want to change, then select an option for that setting.
- 3 Tap Exit to close the settings menu.

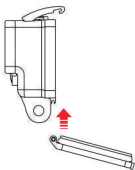
## SWAPPING BACKDOORS



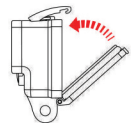
- 1** Open the housing so the backdoor hangs downward.



- 2** Pull down on the backdoor until it snaps free from the hinge.



- 3** Align the new backdoor with the hinge.



- 4** Push up on the backdoor until it clicks into place.

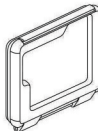
## HOUSING BACKDOORS

Your HERO+ LCD camera comes with three backdoors, each designed for different uses and environments.



### STANDARD BACKDOOR

Provides waterproof protection to 131' (40m). Use when shooting under water or in wet, damp or dirty conditions.



### SKELETON BACKDOOR

Not waterproof—use in dry, dirt-free environments only. Enables access to the touch display, provides enhanced cooling and allows more direct access to the microphone.